

EDC 15 Recovery using bootmode with MPPS V12

Long story made short

My friend asked if i can add some “oomph” to his VW TDI, so went to ebay bought MPPS chinese clone and got the file. I was ready to flash it, but forgot to checksum it. The end result... well you know the end result. If you read this then probably got similar problems and want to use MPPS to write the original file back in bootmode. Read on and maybe my experiance with this particular problem will help you to solve yours.

I have searched for a solution to fix bad flashing/write disaster or error, or bricked EDC15 or whatever you call it, and got to the point where i found many info regarding how to enter bootmode, desoldering and programming with willem programmer, and found many pictures, wiring and so on.

But aparently none of them described how to do this exatcly, i mean how to write with mpps in bootmode. Everyone was saying that is “simple, jus write in bootmode”, “MPPS can recover almost any EDC15 ECU”, “I’ve done many times” an so on.

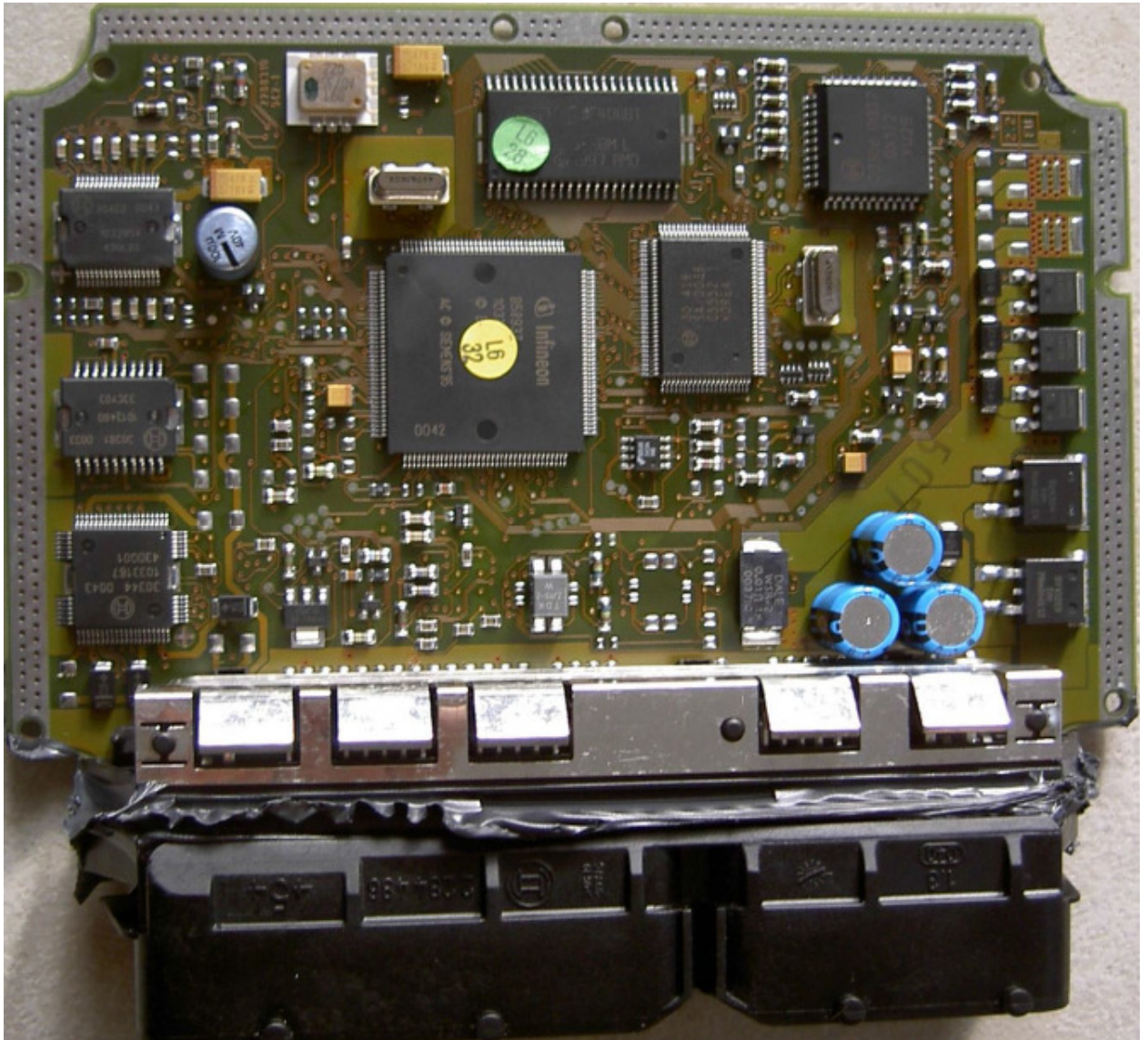
I found this very hard to do, and while searching decided that if i succeed to recover i will do a simple instructions how to do it without asking too many dumb questions.

So here it is in very short description, with pictures.

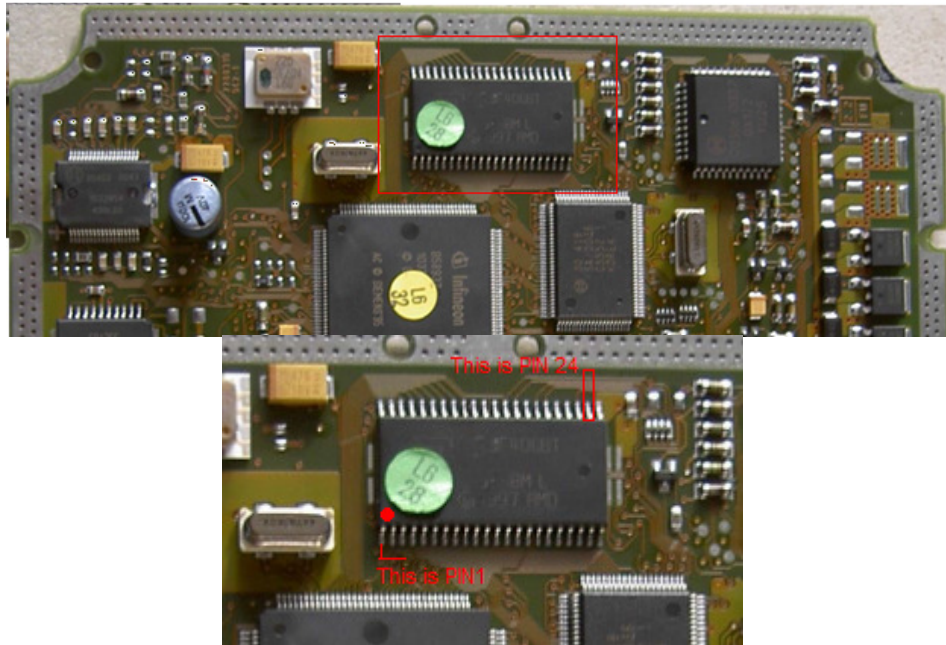
P.S. I do not own the pictures, they are the property of their respective owners, I dont know who are they just found them on the mighty GOOGLE.

You do this on your own, and i cant be responsible for mistakes you make!

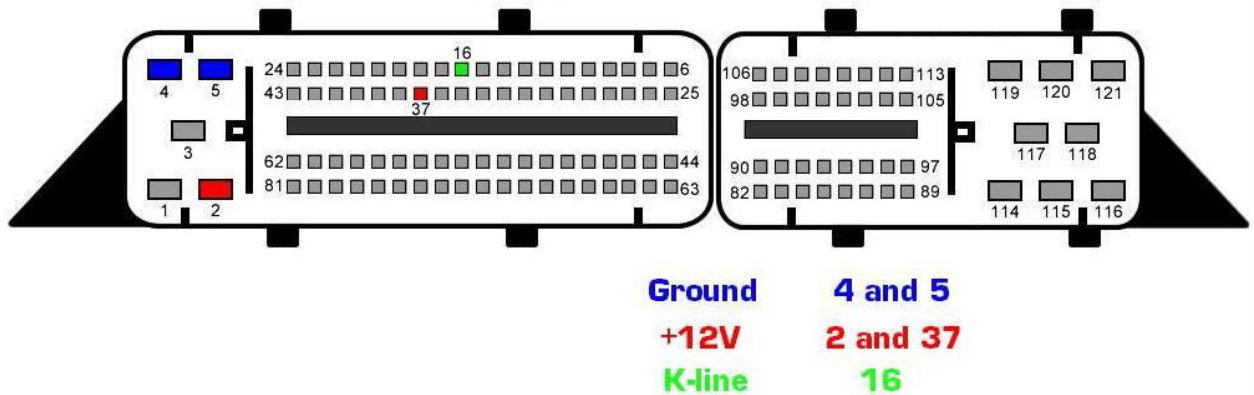
1. **Remove the ECU.** Warm it a little bit up, there is a sealant which holds the housing halves pretty strong, so after warming will be easier to open it. Dont heat it too much, just to be hand warm. Here is the picture, this is what you will probably see inside the ECU case.



2. **29F400 Location and bootmode pin 24.** For now you have to solder a wire to the pin. To the other end of the wire connect 5k resistor. That's it for now. Here are the picture of the chip, and the pin to be used.



3. Prepare all the connections to the ecu and MPPS cable as shown on the picture below.

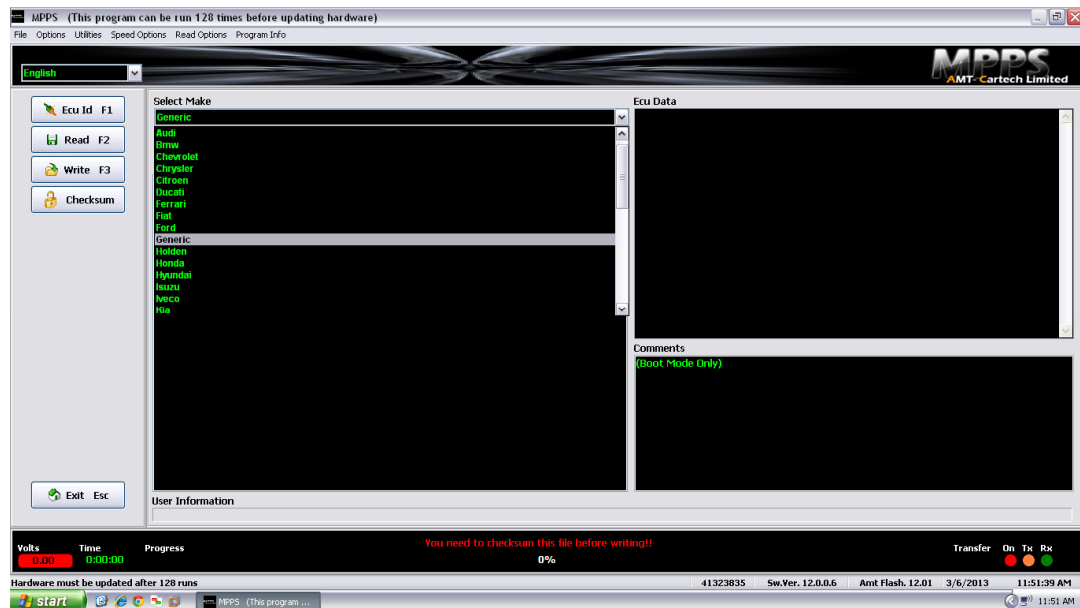


MPPS Cable Pinout:

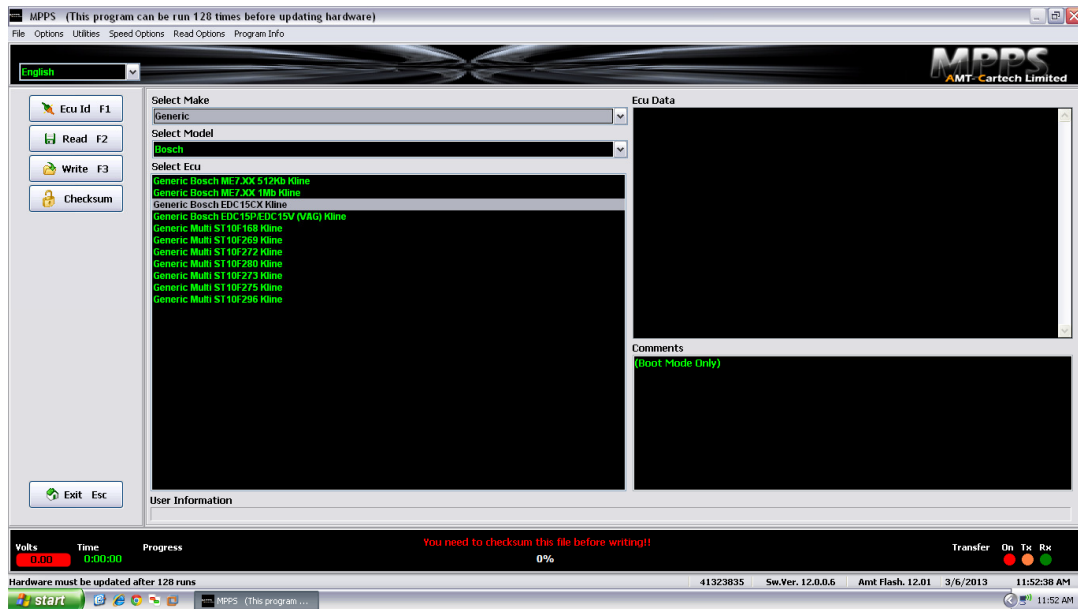


1. Pin16 = **+12v**
2. Pins 4&5 = **Ground**
3. Pin 7 = **K Line**

4. **When all done and checked twice**, connect your MPPS cable to PC, open software and locate the BOOTMODE write function. This was tricky for me, but finally i got to this point and after that everything was a peace of cake. Before connectin the +12v power supply to the proper cable as you have seen in the pictures above. And before connecting the negative wire be sure to ground the **bootmode pin 24** thru a 5k resistor, and remove it after aprox 15 seconds, but do not disconnect the ecu and MPPS power connections.
5. Navigate to where you choose brand and choose not VW or Audi etc. but choose **GENERIC**. I found this Hardly noticable, and found only after a hint in the internet after 16 hours of searching.



After that choose your ECU as stated in the List that opens after ou choose **GENERIC**



6. Click **Checksum** Open the file that you want to checksum, then open the file that you have read from your car before making any mods. Above the progress bar you will see something written in GREEN color, and you're good to go. Then click **Write**, choose the file to write and wait for a while for the progress bar to reach 100% and you are done, and as happy as I was that I have saved some \$\$ on buying programmers, or used ECU's, or sending to a tuner for a fix.

The most important thing: If you did not undertake a thing what I am talking about or have any questions, just ask in the forum where you have downloaded this file, the community will help as much as they can to solve your problems.

Sorry for mistakes English is my native. Enjoy, and say thanks.

This file is posted only in two places, those guys helped me a lot, and I am very thankful for help:

1. <http://www.ecuconnections.com/>
2. <http://www.digital-kaos.co.uk/>