

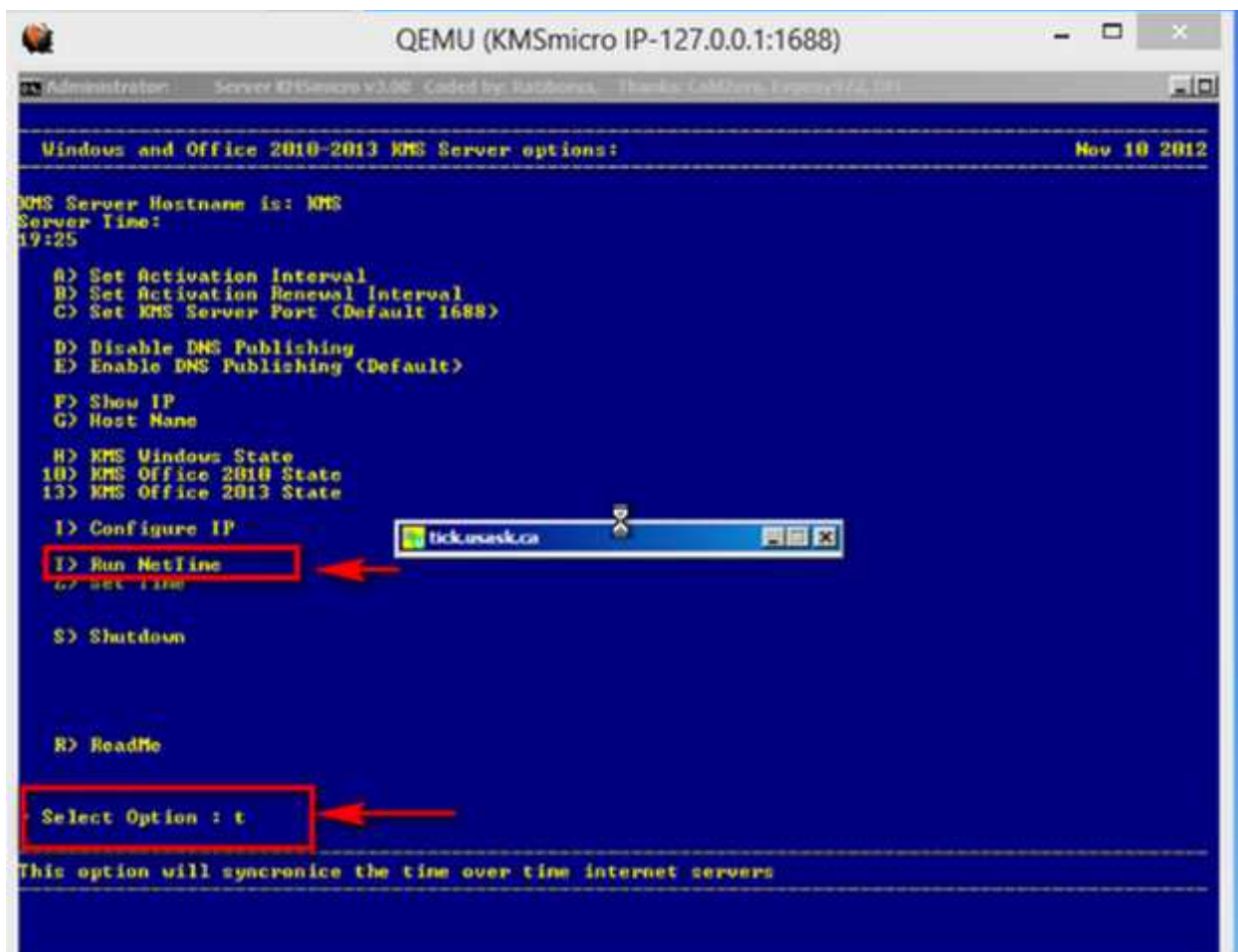
Stand-alone, independent of the system, a local KMS server to activate Windows 7, Windows 8 Professional and Enterprise versions, and with this version and Office 2010 and 2013. You can use a stick.

**Note: KMSmicro v3.10 activate Microsoft Office 2013 Volume Edition Only [Not for retail]  
After Successfully activate you get 180 days then repeat the activation there after.**

## INSTRUCTION

### A. Activating already installed Office 2013

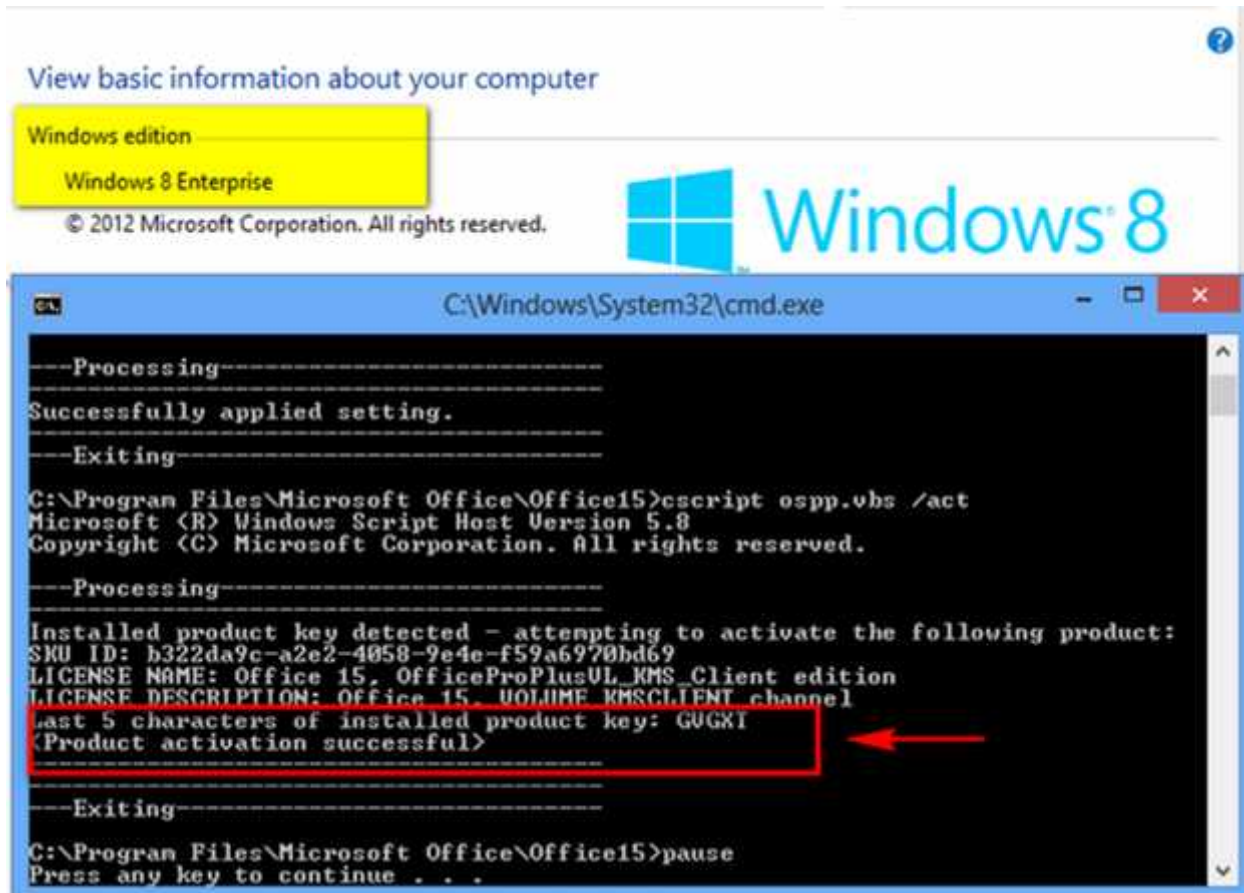
1. Run KMSmicro (Admin Privilege) and select Run NetTime (T)



2. Run one of the following cmd-file on behalf of the Administrator:

Office 2010 Activate.bat Office 2010-x32 & Windows-x32 or Office 2010-x64 & Windows-x64  
Office 2010 (w64-o32) Activate.bat Office 2010-x32 & Windows-x64  
Office 2013 Activate.bat Office 2013-x32 & Windows-x32 or Office 2013-x64 & Windows-x64  
Office 2013 (w64-o32) Activate.bat Office 2013-x32 & Windows-x64.

3. If the end of a saw «<Product activation successful>», the product is activated / activating extended.



4. Close KMSmicro (S)

#### ***B. Activating if you did not installed Office 2013 yet:***

1. Run KMSmicro (Admin Privilege) and select Run NetTime (T)
2. Import the registry required data. Double-click on the file:  
Office2010-Localhost.reg when you install Office 2010;  
Office2013-Win7-Localhost.reg when you install Office 2013 on Windows 7;  
Office2013-Win8-Localhost.reg when you install Office 2013 on Windows 8.
3. Install Office | Visio | Project VL.
4. Run the application and check the status of activation. If you suddenly see that require activation, close the application, wait for 1-2 minutes and check the status of the activation again.  
Rarely, but it happens. Usually the product is activated immediately after installation
5. Close KMSmicro (S)

#### ***If activation fails***

1. You are trying to activate the Retail version of the product
2. Wall / antivirus blocking communication
3. Expired meter unique activation requests. Check the status of input 10 to Office 2010 or Office 13 to 2013.  
Value «Current count» must be at least 4. If you see a lower value, so it is necessary to wind counters.  
But that's another story!

#### ***Supported System***

- Microsoft Office 2013
- Microsoft Office Visio 2013
- Microsoft Office Project 2013
- Windows 8 Enterprise
- Windows 8 Professional
- Microsoft Office 2010
- Microsoft Office Project 2010
- Microsoft Office Project 2010
- Windows 7 Enterprise
- Windows 7 Professional